



The Lodge Est 1974

AT GULF STATE PARK

A Hilton Hotel



21196 East Beach Blvd. | Gulf Shores, Alabama 36542 | 251.540.4000
lodgeatgulfstatepark.com

Where connection comes naturally.™

Tucked along the tranquil coast of Gulf Shores, Alabama, The Lodge invites you to reconnect with nature and the natural beauty of Gulf State Park. Shed the stresses of daily life and focus on connecting with the natural habitat of our coastal paradise.

Conveniently Situated in the Southeast

Located only hours from several major metropolitan areas in the Southeast, The Lodge is just a leisurely drive away! Whether it's for a company event, retreat, vacation, or simple weekend getaway, our convenient location will set you up for an unforgettable experience.



ATLANTA, GA
5.5 hours drive



BIRMINGHAM, AL
4.5 hours drive



MOBILE, AL
1 hour drive



NASHVILLE, TN
7.25 hours drive



TALLAHASSEE, FL
3.75 hours drive



BILOXI, MS
2 hours drive



JACKSON, MS
4.5 hours drive



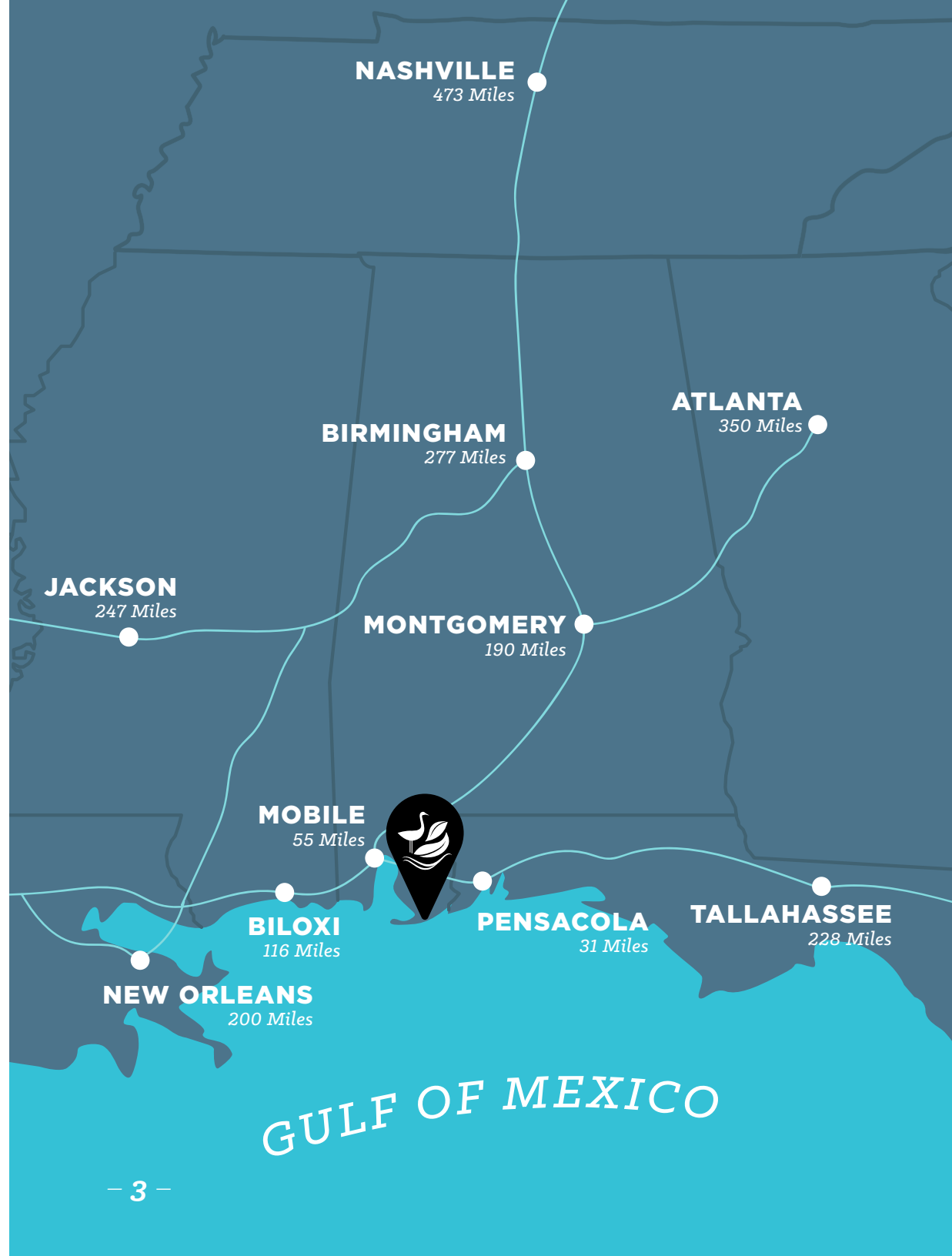
MONTGOMERY, AL
3.25 hours drive



NEW ORLEANS, LA
3.25 hours drive



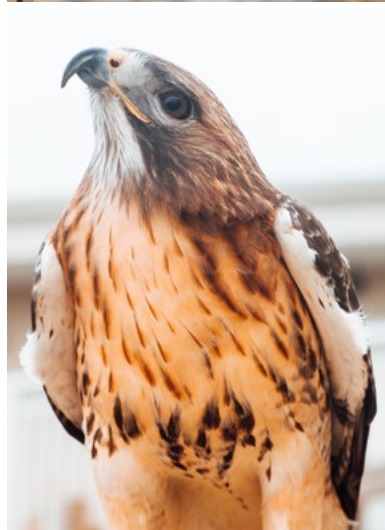
PENSACOLA, FL
1 hour drive



Stunning Features

Our eco-friendly hotel offers a unique blend of modern amenities and natural serenity, creating an ideal environment for vacation and business. With state-of-the-art conference facilities, numerous dining options, room accommodations, and event spaces, The Lodge seamlessly combines work and leisure all while enjoying breathtaking views of the Gulf.

- ▶ 350 guest rooms offering Park, Lake or Gulf Views
- ▶ Over 40,000 square feet of flexible event/meeting space
- ▶ Panoramic Gulf Views
- ▶ Full access to 2.5 miles of undeveloped beach
- ▶ 4 onsite dining outlets
- ▶ Gulf-facing infinity pool
- ▶ Direct access to 6,150 acres of Gulf State Park
- ▶ 28 miles of hiking and biking trails through Gulf State Park
- ▶ Complimentary bike share program
- ▶ Educational programs at the Learning Campus
- ▶ Board games and activities for groups and families
- ▶ Access to the Park's Nature Center and Interpretive Center

[LEARN MORE](#)


Meetings with a View

Offering more than 40,000 square feet of flexible indoor and outdoor event space as well as additional gathering and reception areas, The Lodge is the ideal location for conferences, conventions, business meetings, group events, or celebrations.

ALL MEETING SPACES HAVE:

- ▶ Gulf-facing views
- ▶ 5,500 sq. ft. Dunes Terrace overlooking beach and Gulf of Mexico
- ▶ Award-winning conference services team
- ▶ Extraordinary banquet food & beverage experience, locations, and offerings
- ▶ Award-winning sustainability and environmentally friendly design and initiatives



Elevated Event Spaces

The Lodge elevates any convention, business meeting, celebration, or wedding with unmatched scenery and comfort. Our award-winning conference services team is dedicated to your unique needs, whether they be related to logistics or our robust catering options.



INFORMAL MEETING SPACES

Our unique spaces provide options for cozy, informal gatherings and breakout sessions. Our meticulously designed meeting rooms ensure a productive environment with a perfect blend of style and functionality, all with a Gulf view.

MAIN BALLROOM

Spanning 12,160 square feet, The Lodge proudly boasts the largest beach-view ballroom on the Gulf Coast. With the capacity to accommodate groups up to 1,000 guests, it is the ideal setting for meetings and receptions.

DUNES TERRACE

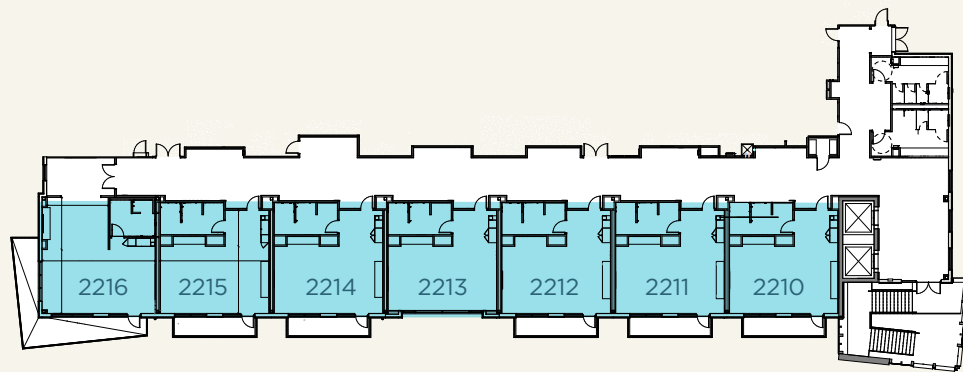
Directly adjacent to the ballroom is the Dunes Terrace, a Gulf-facing patio and terrace perfect for hosting lively get-togethers or cocktail receptions. This expansive 5,500 square foot space offers breathtaking views of the Gulf and its beach, creating an unforgettable backdrop for any event.

CONFERENCE ROOMS

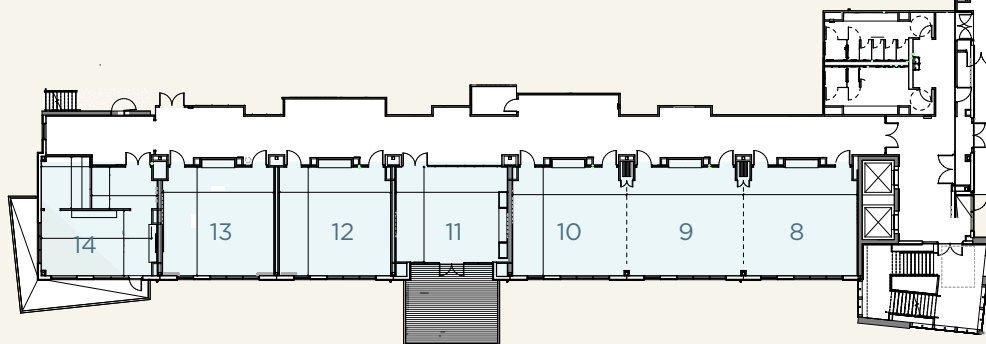
Take advantage of the versatility of our thoughtfully designed conference rooms. Each space is tailored to facilitate any type of session. We also offer various team-building, volunteer, and social responsibility opportunities to ensure a well-rounded conference experience.

[VIEW 360° & 3D TOURS](#)

Event Space Floor Plans



2nd Floor - 7 Meeting Suites



1st Floor - 7 Conference Rooms



Dunes Terrace - 5,500 sq. ft.

[VIEW 360° & 3D TOURS](#)

GULF OF MEXICO

Event Space Capacity Chart



ROOM NAME	AREA-SQ FEET	LENGTH (FT)	WIDTH (FT)	BANQUET	CLASSROOM
Gulfview Ballroom	12,160	160	76	800	550
Gulfview I	4,104	54	76	270	170
Gulfview II	4,104	54	76	270	170
Gulfview III	1,976	52	38	130	80
Gulfview IV	1,976	52	38	130	80
Dunes Terrace	5,500	132	42	450	
Ballroom Pre-Function	5,082			420	
The Burrow	902	41	22	80	45
Live Oak	2,226	84	26.5	180	105
Live Oak I (8)	716	27	26.5	50	36
Live Oak II (9)	716	27	26.5	50	36
Live Oak III (10)	716	27	26.5	50	36
Sea Oats (11)	635	27	23.5	50	26
Dogwood (12)	716	27	26.5	50	36
Cypress (13)	716	27	26.5	50	36
Board Room (14)	432	27	16		
Meeting Suites 2210-2215	459	27	17	30	18
Corner Meeting Suite 2216	672	28	24	40	24

Fuel Your Connections

After a productive day of networking and meetings, or exploring our trails and connecting with nature, you're sure to work up an appetite. We have everything you need to refuel and enjoy yourself at The Lodge.

Unique Dining Options

We're proud to offer an array of elevated on-site dining options that boast a unique dining experience, locally sourced ingredients, and a community atmosphere you'll always have a taste for.



Foodcraft
fresh. local. delicious.

FOODCRAFT

Foodcraft Restaurant is home to coastal favorites and stunning views. It's a great dining option for breakfast, lunch, and dinner. Enjoy extraordinary American cuisine with a regional craft beer, a nice glass of wine, or one of the best handmade cocktails in Gulf Shores. Top it off with a table on our expansive outdoor patio, with scenic views of the Gulf of Mexico.



Perch
steaks. seafood. sunsets.

PERCH

Perch is the perfect steakhouse and coastal seafood restaurant to enjoy cocktails and sunsets. It's an elevated dining experience featuring premium steaks, fresh seafood, unique wines, and handcrafted cocktails. It's a place where everyone can relax and enjoy a gorgeous view of our famous Gulf Coast sunsets.



WOODSIDE

Woodside is a place for family fun, great food, backyard games, and the best live local music. It is located in the heart of Gulf State Park and is open daily for breakfast, lunch, and dinner. Enjoy pet-friendly outdoor seating under the oaks. Food, beer, and wine are available for carryout.



DRAGONFLY

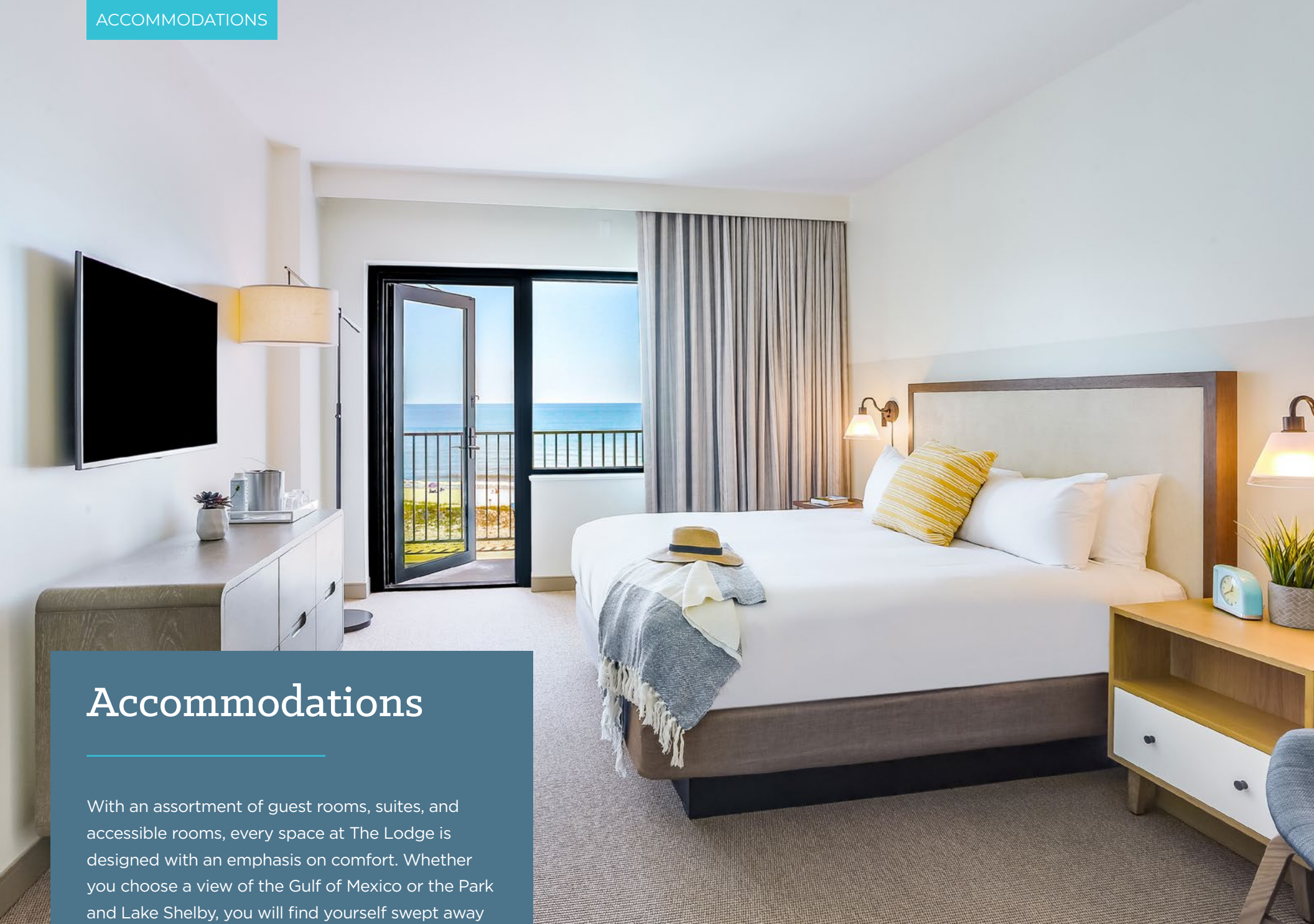
Savor coastal bliss at Dragonfly Bar & Grill, where mouthwatering bites meet the stunning views of the Gulf of Mexico. Whether you're seeking an outdoor escape for a casual lunch, winding down after a full day of fun, or sipping delicious drinks with loved ones, Dragonfly Bar & Grill has something for everyone.

Roasted Oak



ROASTED OAK

Nestled in our lobby, Roasted Oak transforms from a cozy coffee shop during the day to an inviting wine bar at night. Whether you're in need of a quick pick-me-up or a leisurely evening indulgence, this versatile spot offers light bites and convenient grab-and-go options to energize you for that next activity.



Accommodations

With an assortment of guest rooms, suites, and accessible rooms, every space at The Lodge is designed with an emphasis on comfort. Whether you choose a view of the Gulf of Mexico or the Park and Lake Shelby, you will find yourself swept away by the stunning panoramic views.

GUEST ROOMS

Choose from a wide range of comfortable guest rooms so no matter who you travel with, there are suitable accommodations. With rooms featuring king, queen, and bunk beds, we ensure a relaxing stay.

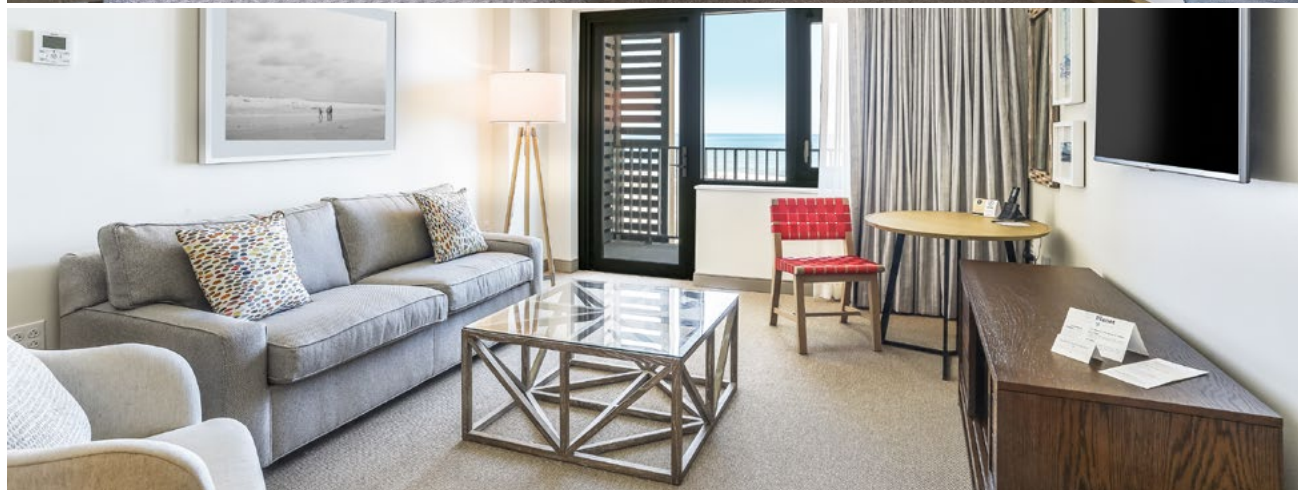
**Each room features a spectacular Lake Shelby or Gulf view, a 50-inch TV, a spacious shower or bathtub, and a Hilton Serenity Bed with a plush, allergen-free comforter, pillows, and mattress. Each guest room also includes two-line phones with voicemail, in-room safe, coffee maker, mini-fridge, iron, ironing board and a hair dryer.*

SUITES

All suites feature a private balcony plus all the comforts of our guest rooms. Some of our suites offer separate living areas and bunk beds, while our meeting suites feature extra space for small gatherings and beautiful beach views.

ACCESSIBLE ROOMS

Enjoy all the amenities of our guest rooms, plus thoughtful extras to ensure a comfortable stay. Accessible rooms feature audio/strobe alarms, doorbells, and telephones, plus roll-in showers or accessible bathtubs.



[VIEW 360° TOUR](#)

A Sustainable Commitment

The Lodge at Gulf State Park is a proud leader in the Sustainable Tourism movement. We've incorporated the principles of ecotourism into the overall guest experience by creating increased benefits for both the host community and its visitors. This includes eco-friendly bath amenities, responsible water sourcing, energy conservation, and wildlife-conscious features. We take pride in enhancing the positive experience of our travelers in an environmentally sensitive manner, all while protecting our beautiful, natural destination.

- ▶ **15%** of all materials are recycled materials
- ▶ **70-75%** of construction waste was recycled
- ▶ **32%** reduction in energy usage by design
- ▶ **35%** reduction in water usage compared to a typical facility



Relax, Explore, and Discover Gulf State Park

Just steps away from The Lodge is the beautiful and expansive Gulf State Park. Because our accommodations are centrally located, it is easy for guests to access everything in the area while getting in touch with the Gulf's natural environment. Whether it's exploring over 28 miles of hiking and biking trails or 800 acres of freshwater lakes with easy access to water activities, there's no doubt you will discover something to enjoy at Gulf State Park.

THINGS TO DO

- ▶ Hike or bike the 28 miles of trails
- ▶ Take a Coastal Segway Tour
- ▶ The Learning Campus provides an opportunity for learning through immersive programming and hands-on experiences
- ▶ Go on a geocaching adventure
- ▶ Enjoy free bike sharing
- ▶ Embark on a kayaking or paddleboarding trip
- ▶ Grab some binoculars and birdwatch
- ▶ Freshwater fishing





Nearby Attractions

While you can certainly find much to do on our grounds, there are plenty of activities off-site in the surrounding Gulf Shores area. There are few things better than beginning the day with a round of golf at one of the Gulf Coast's lush golf courses or shopping and exploring the bustling atmosphere of The Wharf at Orange Beach. With a variety of activities and attractions nearby, your Gulf Shores getaway promises endless possibilities.

THINGS TO DO

- ▶ World-famous Flora-Bama Lounge & Oyster Bar
- ▶ Fort Morgan
- ▶ Craft Farms, Peninsula, and Kiva Dunes golf courses
- ▶ Tanger Outlets Foley
- ▶ Alabama Gulf Coast Zoo
- ▶ Bon Secour National Wildlife Refuge
- ▶ The Wharf at Orange Beach



The Lodge ^{Est 1974}

AT GULF STATE PARK

A Hilton Hotel

It's time to Connect, Naturally!

BOOK YOUR STAY TODAY.

lodgeatgulfstatepark.com

21196 East Beach Blvd. | Gulf Shores, Alabama 36542 | 251.540.4000

